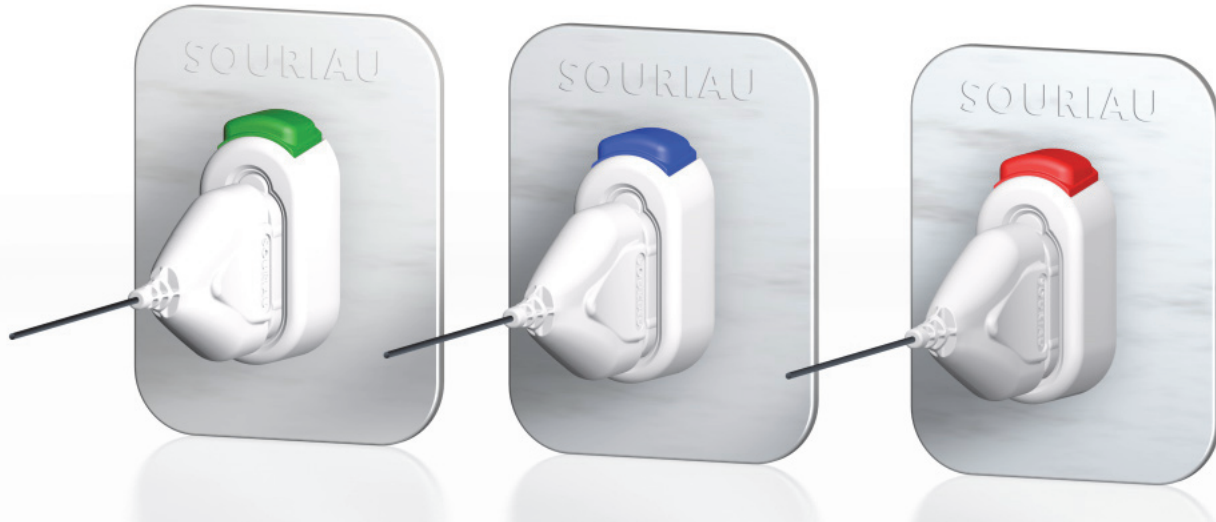


# Push-Pull Series Disposable connectors

**SOURIAU**



## Disposable connectors for Medical applications

### A reliable connection at optimized cost

**Reliable connector** ■ More than 10,000 mating cycles on the receptacle  
A cost effective plug for a single use (10 cycles)

**Easy to use** ■ Smart connection with a blind mating  
Only one hand is needed for unmating

**Color identification** ■ 9 different color codes for easy identification

**Large range of layout** ■ Different layouts available from  
12 to 34 contacts

**Sterilizable** ■ Steam autoclave, EtO and Gamma



## Technical Features

### Environmental

- **Operating temperature:**  
From -10°C to 65°C
- **Sterilization:**
  - Steam autoclave
  - ETO
  - Gamma
- **Sealing:**  
IP40

### Mechanical

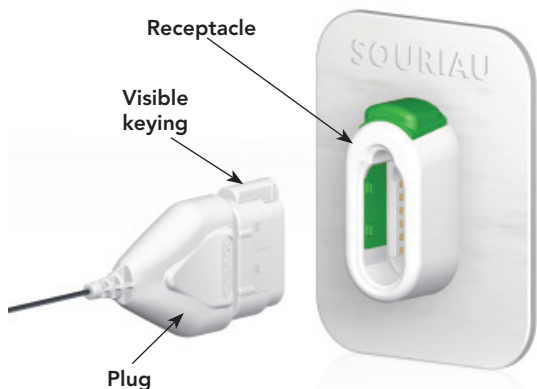
- **Durability:**
  - Receptacle: 10,000 cycles
  - Plug: 10 cycles
- **Color coding :**  
9 color identifications

### Electrical

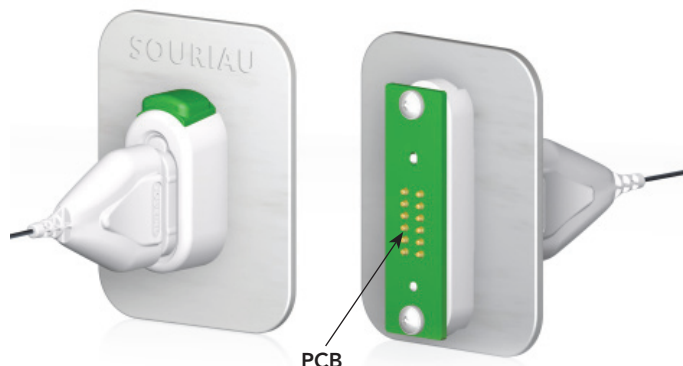
- **Ground :**  
1 ground contact possible
- **Current & Voltage :**
  - Current: 2 mA
  - Voltage: 24 V

## Disposable description

### Unmated connectors



### Mated connectors

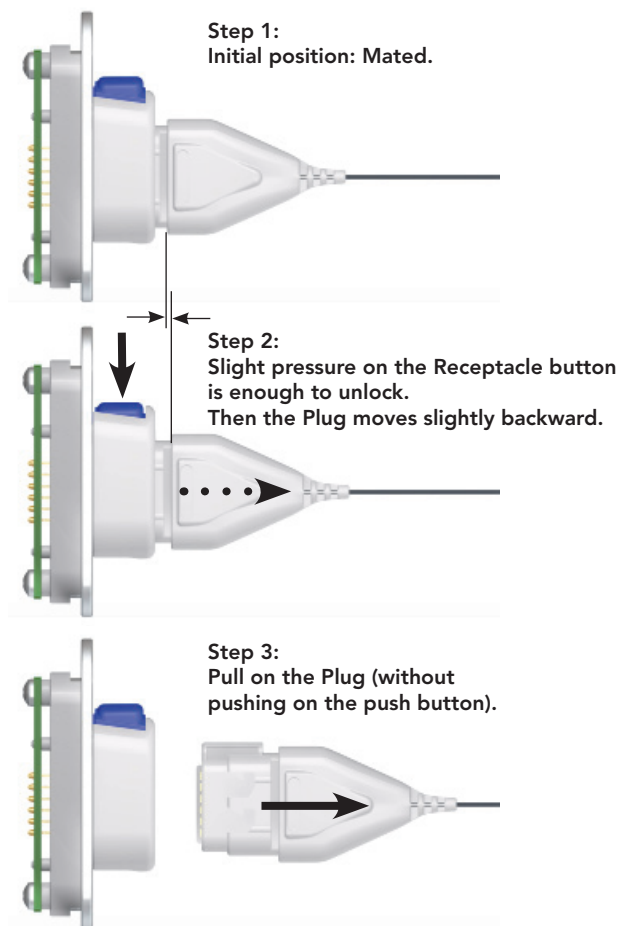


## Mating and unmating operation principle

### Mating

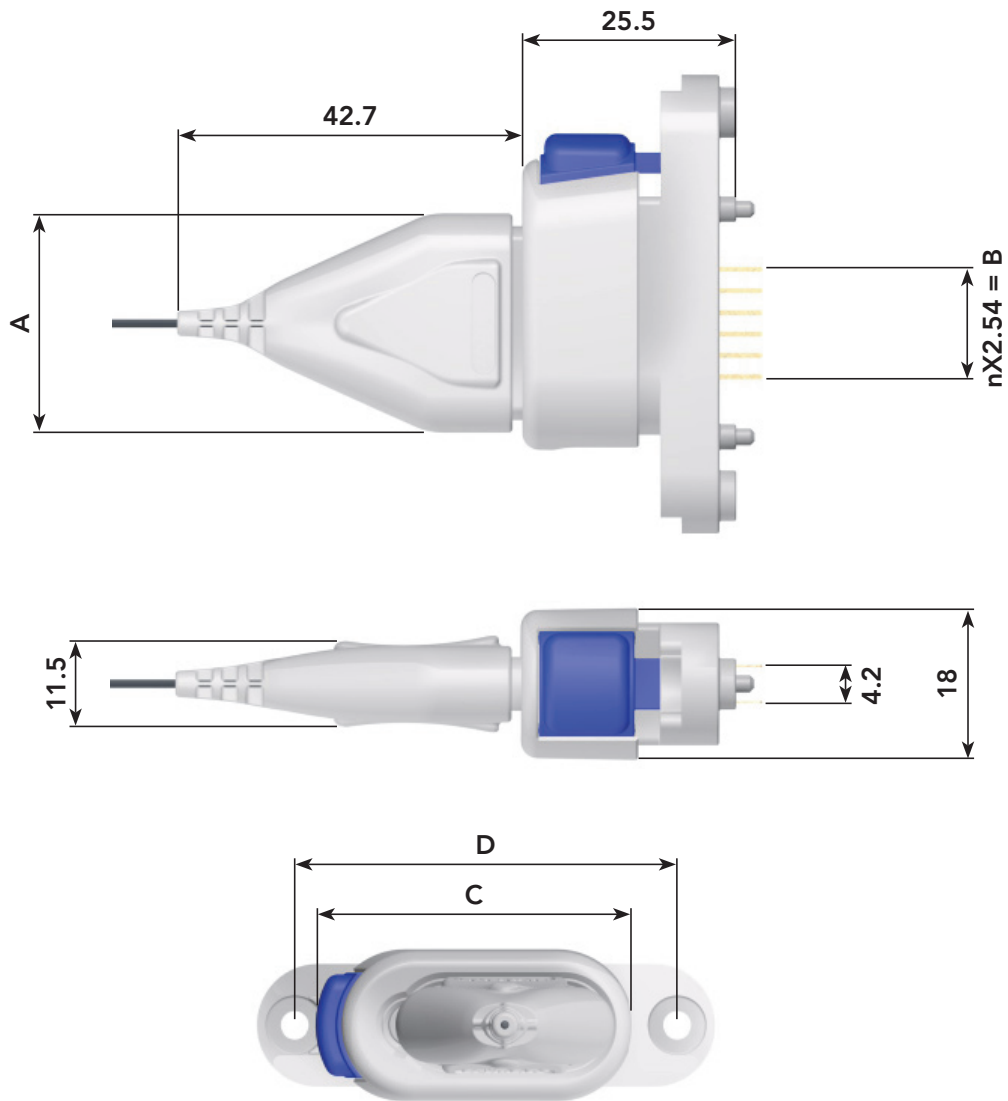


### Unmating



These 3 operations can be done with one hand

## Mated Connector Length



Number of contacts	n	A (mm)	B (mm)	C (mm)	D (mm)
12	5	26	12.7	37.5	45.5
16	7	31.08	17.78	42.58	50.58
34	16	53.94	40.64	65.55	73.44

Note: all dimensions are in mm and for information only

[www.esterline-connection-technologies.com](http://www.esterline-connection-technologies.com)  
[technical-emear-ect@esterline.com](mailto:technical-emear-ect@esterline.com) (Europe - Asia - Africa)  
[technical-americas-ect@esterline.com](mailto:technical-americas-ect@esterline.com) (North America)